



## CTM 012 ROMAN (LATE)

CONVERSION KIT FOR ITALERI No. 756

CTM 0-0 PHOTOETCHED AND RESIN PARTS



CTM 012 ROMAN (LATE) CONVERSION KIT FOR ITALERI No. 756



- DETACH WITH KNIFE



- BEND



- REPLACE



- OPTIONAL



- NUMBER OF WORKING STEPS



- MAKE A HOLE



- GRIND

*This set is not a children's toy and was designed for professional modellers only who already have some skills in working with photoetched parts. Special tools for bending of photoetched parts is recommended when working with this set. Non using this tool during bending may cause destruction of the part. Careful bending of the most of the parts could be also using a metal ruler, a sharp knife and a tweezer on a hard surface. Pay attention, be careful and keep your safety and health in mind during work!*

*For gluing and filling a cyanoacrylate glue and a glue removing liquid is recommended. Whe (or even before) working with each part inspection of the real part on the vehicle or a picture of the real thing is recommended and helpful.*

*Ussing some of the etched parts may be conditional on kit plastic parts modification.*

### CTM 012 ROMAN (late)

*This set cover Roman trucks built Romania under MAN license between early 1970's and early 80's. The set contains the grille for ROMAN trucks, all the necessary and lettering, old type dashboard and windscreen wipers*

#### Parts description:

- |  |   |
|--|---|
| 1/ grille mesh (lower part)                      | 12/ Diesel badge (fits part No.1)                             |
| 2/ grille frame (upper part)                     | 13/ dashboard panel (fits part No.14)                         |
| 3/ wipers arms                                   | 14/ dashboard main part                                       |
| 4/ wipers  | 15/ dashboard upper lath (fits part No.14)                    |
| 5/ TIR plate                                     | 16/ dashboard lower lath (fits part No.14)                    |
| 6/ radio (fits part No. 9)                       | 17/ gauges (fits part No. 14)                                 |
| 7/ dashboard central panel (fits part No. 14)    | 18/ windscreen defroster vents (fits upper part of dashboard) |
| 8/ speed limit plate (Czechoslovakian style)     | 19/ tachograph frame (fits part No.17)                        |
| 9/ dashboard locker door (fits part No. 14)      | 20/ ROMAN badge (fits part No.1)                              |
| 10/ Romanian international identity plate        | 21/ ROMAN lettering for alternative separate painting         |
| 11/ Czechoslovakian international identity plate | (fits part No.20)   |



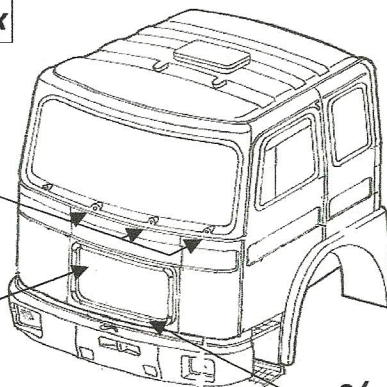
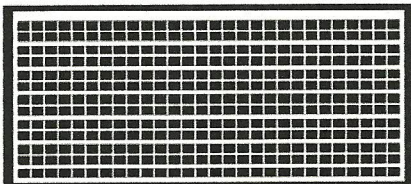


4/ wipers **R** 3x

3/ wipers arms

**R** 3x

1/ grille mesh (lower part) **R**



2/ grille frame (upper part) **R**

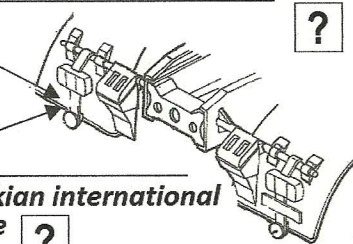


8/ speed limit plate (Czechoslovakian style)



11/ Czechoslovakian international identity plate

?



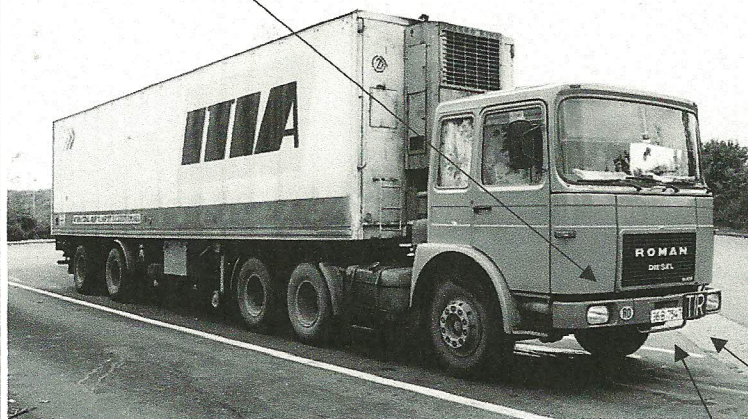
10/ Romanian international identity plate

?



5/ TIR plate

?



21/ ROMAN lettering for alternative separate painting  
(fits part No.20)

**ROMAN**



20/ ROMAN badge (fits part No.1)

12/ Diesel badge (fits part No.1)

**DIESEL**

**ROMAN**

17/ gauges (fits part No. 14) **R**



19/ tachograph frame  
(fits part No.17)

13/ dashboard panel  
(fits part No.14)

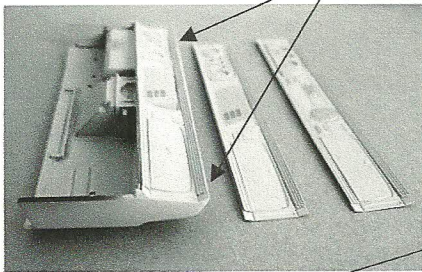
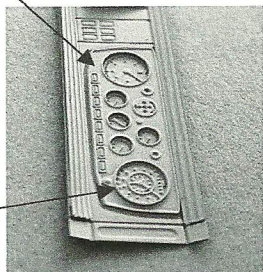


14/ dashboard main part

**R**



18/ windscreen defroster vents (fits upper part of dashboard)



6/ radio **R**



7/ dashboard central panel  
(fits part No. 14)

**R**

9/ dashboard locker door  
(fits part No. 14)



**R**

15/ dashboard upper lath (fits part No.14)

16/ dashboard lower lath (fits part No.14)

